



## LOFT SERIES DIRECT-VENT FIREPLACES







Loft Medium Direct-Vent  
Fireplace with Matte Black  
and Stainless Steel Surround



## Loft Contemporary Direct-Vent Fireplaces

Available in two sizes, 18,000 and 23,000 Btu, Loft Series fireplaces let you exhibit your flair for contemporary design.

Designed for in-wall or mantel installation, Loft fireplaces feature state-of-the-art technology for extraordinary performance.

Flickering yellow flames dance atop the linear burner reflecting light off the glass and the porcelain liner to create a nearly infinite flame effect - making your Loft fireplace mesmerizing from any angle.

### Fireplace Controls

Millivolt systems operate without electricity to provide heat even in a power outage and operate with an optional on-off remote control or wall switch.



Our Green Earth Preferred™ Intermittent Pilot (IP) systems improve efficiency by eliminating the standing pilot light. IP systems include an on/off switch - add a remote control to light your fireplace from anywhere in the room. In the event of a power outage, your IP system can operate with a standing pilot to provide heat.

## Loft Contemporary See-Through Direct-Vent Fireplaces

The 36-inch Loft See-Through Fireplace (30,000 Btu) measures just 18 inches deep and includes our premium Multi-Function remote control to vary the flame height and blower speed, and operate the light - all from the comfort of your recliner.

The black porcelain liner adds to the feeling of depth. Two optional surrounds - matte black and matte black with stainless steel - suit this ultra-contemporary looking system.



Loft See-Through Direct-Vent  
Fireplace with Matte Black  
and Stainless Steel Surround



## Surrounds, Fronts and Accessories

Tailor your Loft fireplace to your décor with one of two surrounds or three fronts.

The elegant matte black surround frames the fireplace and emphasizes the interior. The two-tone surround - with bold stainless steel panels at the top and bottom joined by matte black verticals - accentuates the horizontal lines of the fireplace.

Or choose one of three contemporary fronts:

Float - a clean, one-piece rectangle available in matte black, hammered pewter, and stainless steel.

Eclipse - a concave version of the Float that adds a slight projection into the room. Available in matte black, hammered pewter, and stainless steel.

Manhattan - a mitered picture frame with laser-cut accents at the corners (in matte black or pewter only).

All three fronts attach in minutes to the 1-piece metal backer (available in Matte Black) and include fireplace screens. Screens protect you and your family from inadvertently touching the hot glass - but without detracting from the overall view of the fireplace.

Put a twinkle in your Loft fireplace by covering the burner top with the optional decorative crushed glass. Choose from lustrous Black Polished, Blue Clear, and Clear Frost. Or glass droplets in Onyx, Ruby, and Topaz. Your dealer may offer additional colors.



*Matte Black Surround*



*Stainless Steel & Matte Black Surround*



*\*Manhattan*



*\*Eclipse*

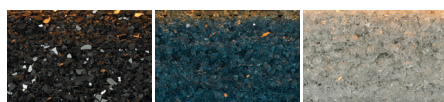
*Eclipse Top View*



*Matte Black*

*Hammered Pewter*

*Stainless Steel*



*Black Polished  
Decorative Glass*

*Blue Clear  
Decorative Glass*

*Clear Frost  
Decorative Glass*



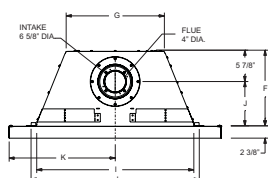
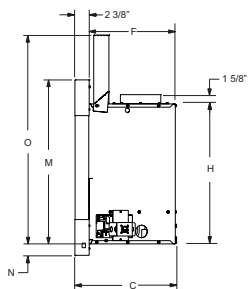
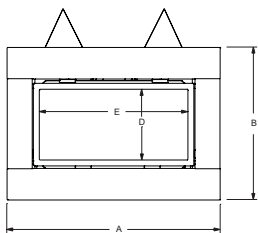
*\*Float*

*\*Shown with 1-piece Metal Backer, required for Installation*

## Loft Series Direct-Vent Fireplace Dimensions (in inches)

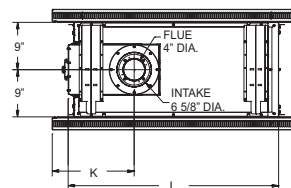
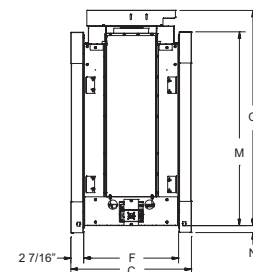
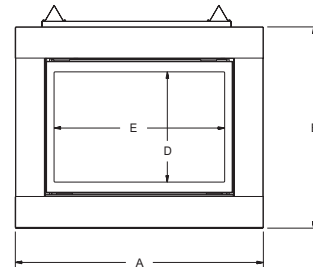
### Conventional

	DVL25FP	DVL33FP
A	37 1/2	40 1/2
B	26	29
C	14 1/4	16 3/4
D	10 7/16	13 7/16
E	25 1/4	28 1/4
F	12 7/8	14 3/8
G	17	18 7/8
H	20 1/8	23 1/8
I	27	30
J	6 7/8	8 1/2
K	18 3/4	20 1/4
L	29	32
M	24 3/16	27 3/16
N	2	2
O	31 3/8	34 3/8



### See-Through

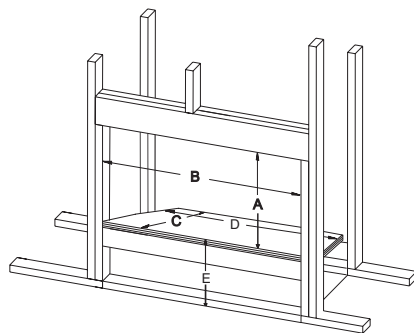
	DLCX36SP
A	47 1/4
B	38 5/16
C	23
D	21
E	32 1/2
F	18 1/16
G	-
H	-
I	-
J	-
K	15 5/8
L	40 1/16
M	36 5/16
N	1 5/16
O	41



## Minimum Combustible Framing Dimensions

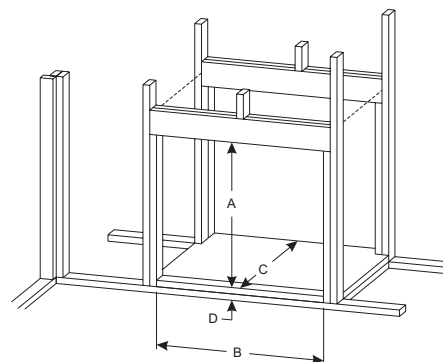
### Conventional

	DVL25FP	DVL33FP
A	32 1/4	35 1/4
B	29	32
C	15 1/2	17
D	21	22 3/4
E	4 (Min.)	4 (Min.)



### See-Through

	DLCX36SP
A	41 1/2
B	40 1/2
C	17
D	3 (Min.)



GAS INLET		WARRANTY
Type of Gas (State on Order)	Natural or LP	All vented parts carry a 3-year limited warranty.  Remote control systems carry a 1-year limited parts warranty
Iron Pipe Size (N.P.T.)	1/2 inch	
Ignition Systems	Standing Pilot/Piezo or IP	
Vent Size	4 x 6 5/8-inch (see manual for venting requirements)	

Empire is committed to continuous product improvement; specifications are subject to change without notice. Dimensions in this brochure are approximate; read and follow the framing dimensions in the owners manual supplied with your Empire product. Specifications are subject to change without notice. Flame size, shape, and color will vary from photos

Member of the following industry associations:



This appliance is design-certified to the ANSI standard by:



Empire Comfort Systems  
918 Freeburg Ave. Belleville, IL 62220-2623  
info@empirecomfort.com

ECS-00903 7/17/13

The Empire Comfort Systems names and logos are registered U.S. trademarks.

www.empirecomfort.com